

The graphic features a central dark blue rounded rectangle containing the text "AAC INTENSIVE" in white. Below this, the words "THERAPEUTIC CAMP" are written in a black, hand-drawn font. The background is white and decorated with various illustrations: two cartoon otters holding tablets, a family (mother, father, and child) looking at a tablet, and several scattered AAC boards. These boards are grids containing various icons like a smiley face, a heart, a star, a question mark, and a hand. The entire design is framed by a light blue wavy border.

AAC INTENSIVE

THERAPEUTIC CAMP

TALK TIME
BOSTON, MA

TALK TIME BOSTON, LLC

2025



AAC INTENSIVE THERAPEUTIC CAMP



WHAT IS IT?

□ A WEEKLONG FOCUS ON AAC AND LITERACY SKILLS

AAC users need LOTS of exposure to AAC in use to become autonomous communicators. During the week, we'll focus on using AAC in a variety of activities to provide a high dose of exposure.



Why a whole week?

To achieve the same level of exposure to language as an 18-month-old, an AAC user would need 84 years with modeling only twice a week in 30-minute speech sessions.



Focusing on skills for a full week helps MAXIMIZE opportunities for learning

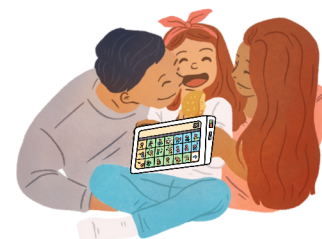
□ A VARIETY OF ENGAGING LEARNING ACTIVITIES

We will explore a combination of small group activities like shared reading, emergent writing, crafts, and snacks while growing AAC, literacy, and social skills.



□ A FAMILY SUPPORT NETWORK

Caregivers will learn strategies to support their little one's language development. In addition to education, caregivers will be able to connect with other families who use AAC.





AAC INTENSIVE THERAPEUTIC CAMP



HOW DO I PREPARE?



Be ready to get MESSY. Our activities may include sensory play and art. Dress your child appropriately and pack an extra pair of clothes (just in case!)



Let your child know that they will be going to a fun class inside where they will get to play with other kids and a new teacher*



**unless they already know Alessandra!*



We have a "take in take out" policy for snacks. We will let you know as we get closer if there are any allergies to consider.



If your child uses a high-tech communication system, make sure you charge your child's communication device the night before so it is ready for the day!



We love fidgets! We will have plenty for children to use, but please check in with us if your child has preferred regulatory toys you would like to bring in. If your child enjoys chewing, please bring your own.



AAC INTENSIVE THERAPEUTIC CAMP

LOGISTICS



DATE: February 17th - 21st AND April 21st - 25th

TIME: 3:00pm - 5:30pm

ADDRESS: 7 Central Street, Arlington, MA

See the Arlington Clinic handout for parking details!



Please arrive promptly at 3:00. There is a small lobby and a kitchen on the first floor of the office if you arrive early.



We will incorporate regular **bathroom breaks** into the afternoon. There are bathrooms right outside the clinic room, as well as on the bottom floor.



There is no changing table, but bathrooms are large enough to accommodate diaper and pull-up changes.





DAILY AGENDA 3:00PM - 5:30PM

□ Circle Time

After transitioning in, we will start with a circle time similar to a morning meeting. Each day will have a different focus (e.g., introducing selves, talking about the weather, sharing interests).

□ Pre-Reading Activities

Before reading, we'll discuss a literacy skill and language strategy. Printed communication boards and other supports will be available for all participants. Each child will have an opportunity to engage with our book before we start reading.

□ Reading Activities

During reading, we'll focus on a different literacy skill each day. The SLP will model strategies, and parents will have a chance too!

□ Post-Reading Activities

After reading, we'll have a daily group activity that emphasizes our literacy skill. Parents will receive feedback from the SLP while they implement learned strategies.

□ Snack

We will break for snack every day and practice incorporating modeling into meal-time activities.

□ Free Play

Extension activities will include sensory activities and toys related to the book content, arts and crafts, and incorporating the week's targets into free play.

□ Goodbyes

We will finish the day in a circle with our Goodbye Song.





AAC INTENSIVE THERAPEUTIC CAMP



CONTENT

✔ WHAT WE WILL WORK ON:

Communication skills

Using AAC and multi-modal communication to communicate for a variety of reasons

Early literacy skills

Building and reinforcing foundational literacy skills and incorporating AAC

Collaborative play

Supporting children and families on how to integrate AAC into play routines

Caregiver skills

Providing education and practice so that families can increase their confidence supporting their AAC learner



✗ WHAT IT'S NOT:

Just for kids

We are excited to collaborate with caregivers and provide teaching for both parent and child!

Academic tutoring

While we are targeting early literacy skills, children will not be receiving explicit academic tutoring.

Play group

All activities are chosen to be therapeutic for each child's needs, and play will be incorporated; however it will be a structured day.





AAC INTENSIVE THERAPEUTIC CAMP



CAREGIVER LEARNING

A unique aspect of this intensive is our focus on supporting communication partners AND AAC users.

- We know how hard it is to not only get used to using AAC, but also to feel confident using it in different scenarios. During the week, we will be focusing on learning and practicing communication partner strategies for you to use with your child.
- A key component of this intensive is the chance for guided practice. Parents will have the opportunity to practice modeling and supporting their children to build their language using AAC, as well as supporting their early literacy skills.
- AAC users are sometimes a small group in their local communities, and it can feel lonely! By including parents in the therapy, we are hoping it will provide a chance to connect with other families.



- Feel free to ask any questions about your child's communication during our group!
- Clinicians will model language elicitation strategies and offer tips and guidance as needed.





AAC INTENSIVE THERAPEUTIC CAMP



PRICING



FULL PRICE: \$1000

REIMBURSEABLE: \$775

DEPOSIT: \$225

Insurance Reimbursement

We are able to provide superbills for each day of camp, meaning that up to \$775 of the camp is eligible for reimbursement using out-of-network benefits. Each day of camp can be reimbursed as the equivalent of one speech-language therapy session.

Reimbursement eligibility may vary from plan-to-plan. We encourage you to contact your insurance provider directly to determine the out-of-network benefits for your plan.

If you intend to submit superbills for reimbursement, you would pay a deposit of \$225 up front and be billed \$155/day as the camp runs.

Private Pay

If you don't plan to submit for reimbursement, you would pay in full through our website for a total of \$1000.

More Questions?

Let us know! We can provide you with our Insurance FAQs and more information on the out-of-network reimbursement process.

Please Note

Due to the group nature of the camp and the planning required, we are unable to offer refunds. If an emergency arises that prevents you from attending all or part of the camp, please contact us directly: info@talktimeboston.com



WWW.TALKTIMEBOSTON.COM/CAMPS/AAC

 TALKTIMEBOSTON